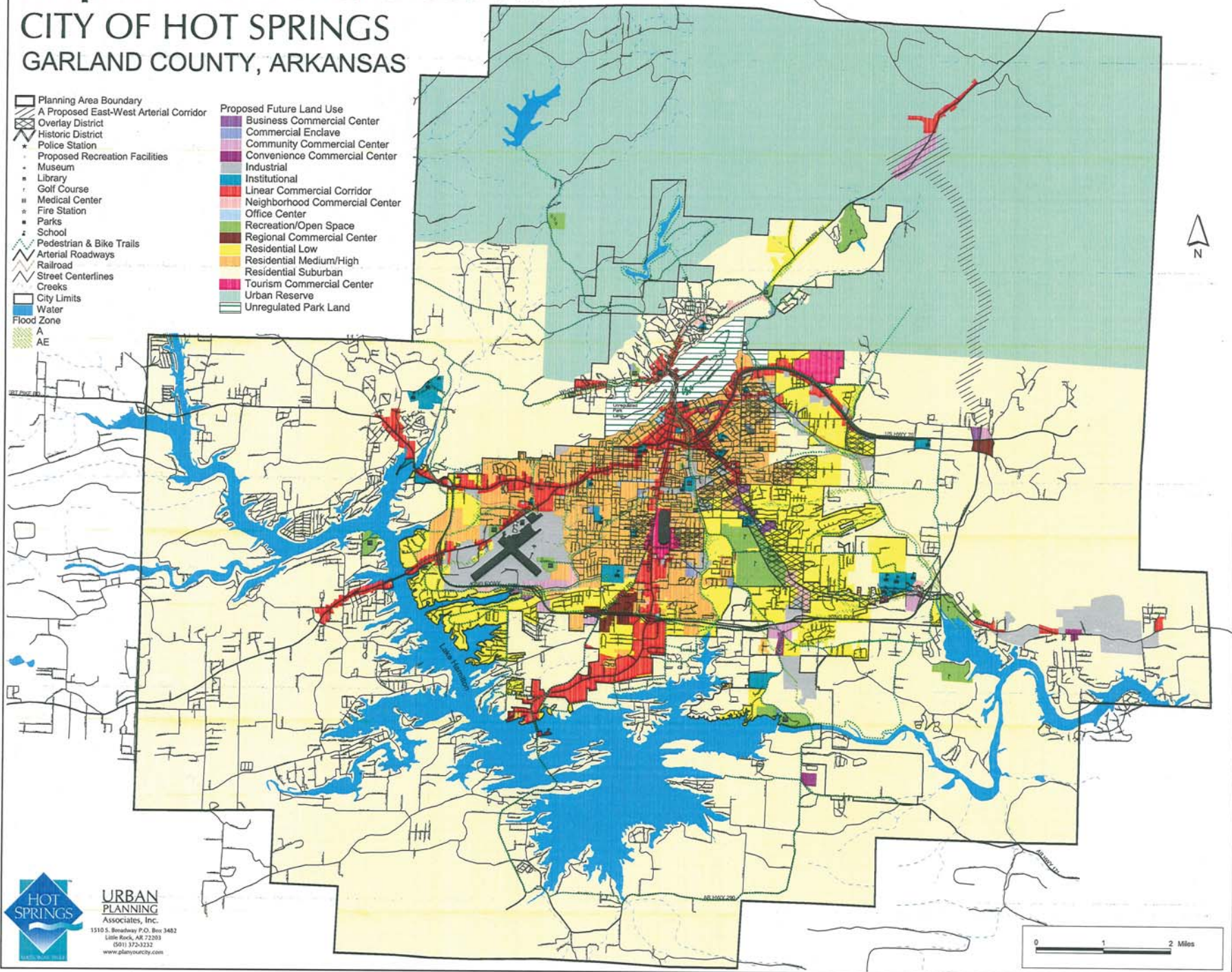


Proposed Future Land Use Plan

CITY OF HOT SPRINGS GARLAND COUNTY, ARKANSAS

- | | |
|---|--|
| <ul style="list-style-type: none"> □ Planning Area Boundary ▨ A Proposed East-West Arterial Corridor Overlay District ▨ Historic District ★ Police Station • Proposed Recreation Facilities • Museum • Library • Golf Course • Medical Center • Fire Station • Parks • School ▬ Pedestrian & Bike Trails ▬ Arterial Roadways ▬ Railroad ▬ Street Centerlines ▬ Creeks ▬ City Limits ▬ Water ▬ Flood Zone ▬ A ▬ AE | <ul style="list-style-type: none"> Proposed Future Land Use ■ Business Commercial Center ■ Commercial Enclave ■ Community Commercial Center ■ Convenience Commercial Center ■ Industrial ■ Institutional ■ Linear Commercial Corridor ■ Neighborhood Commercial Center ■ Office Center ■ Recreation/Open Space ■ Regional Commercial Center ■ Residential Low ■ Residential Medium/High ■ Residential Suburban ■ Tourism Commercial Center ■ Urban Reserve ■ Unregulated Park Land |
|---|--|



URBAN PLANNING
Associates, Inc.
1510 S. Broadway, P.O. Box 3482
Little Rock, AR 72203
(501) 372-3232
www.planyourcity.com

