



City of Hot Springs Recycle Calendar - 2017

For Information Call 321-6911

Route C

Recycle - Aluminum Cans - Newspaper - Corrugated Cardboard - Phonebooks - Plastics #1

Yard Waste such as leaves, branches, grass - Place at Curbside prior to 6 AM on day indicated

January						
Sun	Mon	Tue	Wed	Thu	Fri	Sat
1	2	3	4	5	6	7
8	9	10	11	12	13	14
15	16	17	18	19	20	21
22	23	24	25	26	27	28
29	30	31				

February						
Sun	Mon	Tue	Wed	Thu	Fri	Sat
			1	2	3	4
5	6	7	8	9	10	11
12	13	14	15	16	17	18
19	20	21	22	23	24	25
26	27	28				

March						
Sun	Mon	Tue	Wed	Thu	Fri	Sat
			1	2	3	4
5	6	7	8	9	10	11
12	13	14	15	16	17	18
19	20	21	22	23	24	25
26	27	28	29	30	31	

April						
Sun	Mon	Tue	Wed	Thu	Fri	Sat
						1
2	3	4	5	6	7	8
9	10	11	12	13	14	15
16	17	18	19	20	21	22
23	24	25	26	27	28	29
30						

May						
Sun	Mon	Tue	Wed	Thu	Fri	Sat
	1	2	3	4	5	6
7	8	9	10	11	12	13
14	15	16	17	18	19	20
21	22	23	24	25	26	27
28	29	30	31			

June						
Sun	Mon	Tue	Wed	Thu	Fri	Sat
				1	2	3
4	5	6	7	8	9	10
11	12	13	14	15	16	17
18	19	20	21	22	23	24
25	26	27	28	29	30	

July						
Sun	Mon	Tue	Wed	Thu	Fri	Sat
						1
2	3	4	5	6	7	8
9	10	11	12	13	14	15
16	17	18	19	20	21	22
23	24	25	26	27	28	29
30	31					

August						
Sun	Mon	Tue	Wed	Thu	Fri	Sat
		1	2	3	4	5
6	7	8	9	10	11	12
13	14	15	16	17	18	19
20	21	22	23	24	25	26
27	28	29	30	31		

September						
Sun	Mon	Tue	Wed	Thu	Fri	Sat
					1	2
3	4	5	6	7	8	9
10	11	12	13	14	15	16
17	18	19	20	21	22	23
24	25	26	27	28	29	30

October						
Sun	Mon	Tue	Wed	Thu	Fri	Sat
1	2	3	4	5	6	7
8	9	10	11	12	13	14
15	16	17	18	19	20	21
22	23	24	25	26	27	28
29	30	31				

November						
Sun	Mon	Tue	Wed	Thu	Fri	Sat
			1	2	3	4
5	6	7	8	9	10	11
12	13	14	15	16	17	18
19	20	21	22	23	24	25
26	27	28	29	30		

December						
Sun	Mon	Tue	Wed	Thu	Fri	Sat
					1	2
3	4	5	6	7	8	9
10	11	12	13	14	15	16
17	18	19	20	21	22	23
24	25	26	27	28	29	30
31						

How to Prepare Recyclables

Be an Earth Angel - Recycle Hot Springs

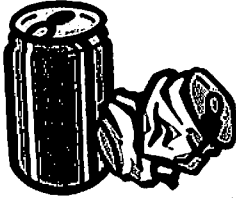
NEWSPAPER



- 1) NEWSPAPERS AND NEWSPRINT ONLY.
- 2) Please keep newspapers dry and not faded by sunlight. A container with lid is supplied for newsprint.

Contaminants include magazines, catalogues and junk mail.

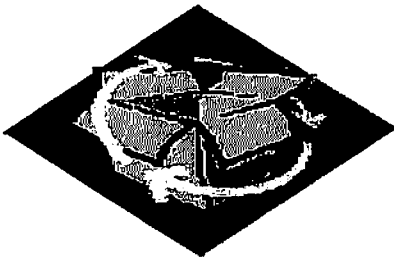
ALUMINUM CANS



- 1) ALUMINUM CANS ONLY. If a magnet sticks to the top or sides it is not aluminum.
- 2) Rinse cans out and drain

Contaminants include foil, pie pans, siding and similar items.

CORRUGATED CARDBOARD



- 1) CORRUGATED CARDBOARD ONLY.
- 2) Flatten boxes and stack together (labels, tape and staples do not have to be removed).
- 3) Place flat on ground with recycle bucket on top.

Contaminants include pasteboard, such as cereal, shoe and detergent boxes.

BROWN PAPER BAGS

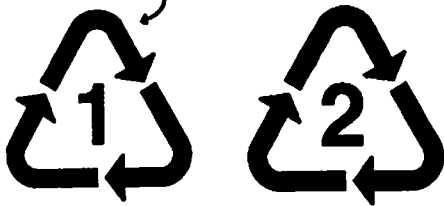


- 1) BROWN PAPER GROCERY BAGS ONLY.
- 2) Put all bags inside one bag and place with other recyclables.
- 3) Request paper bags when making purchases.

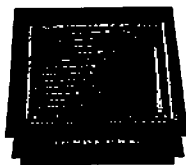
Contaminants include white, colored or bleached grocery bags.

PLASTIC

look for this!



- 1) PLASTIC BOTTLES MUST BE GRADE #1 OR #2 ONLY.
(look for the chasing arrows to determine the grade of plastic)
- 2) Rinse bottles out and drain.
- 3) Remove all lids.



Electronic Waste drop off location

218 Runyon Street Monday - Friday 7:00am - 3:30pm

Electronic waste is only collected at the Recycling Center at the above location and times.

Contaminants listed above are not accepted.

These items cannot be co-mingled and collected with recycled items.