

Session Name: 7-15-2019 7-56 PM (1) (1)

Date Created: 7/15/2019 6:08:02 PM

Active Participants: 45 of 45

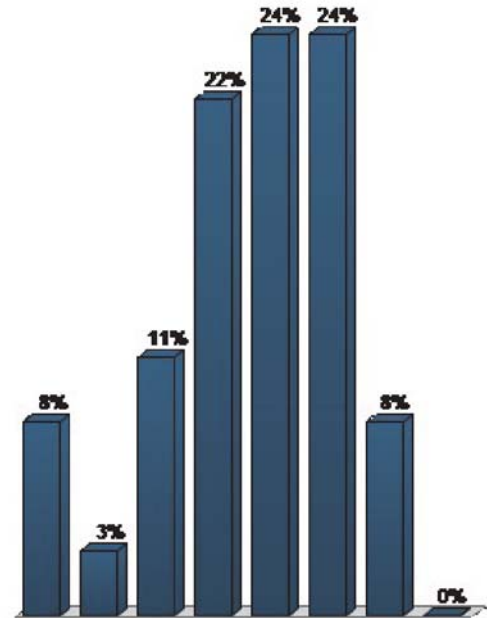
Average Score: 0.00%

Questions: 23

Results by Question

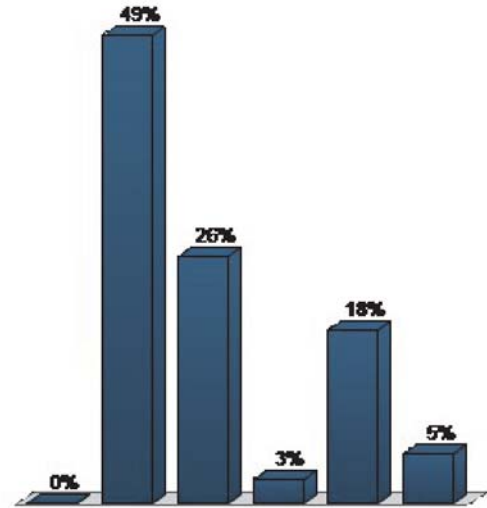
1. How old are you? (choose 1): (Multiple Choice)

Responses		
	Percent	Count
10-19	8.11%	3
20-29	2.7%	1
30-39	10.81%	4
40-49	21.62%	8
50-59	24.32%	9
60-69	24.32%	9
70-79	8.11%	3
Over 80 and awesome	0%	0
Totals	100%	37



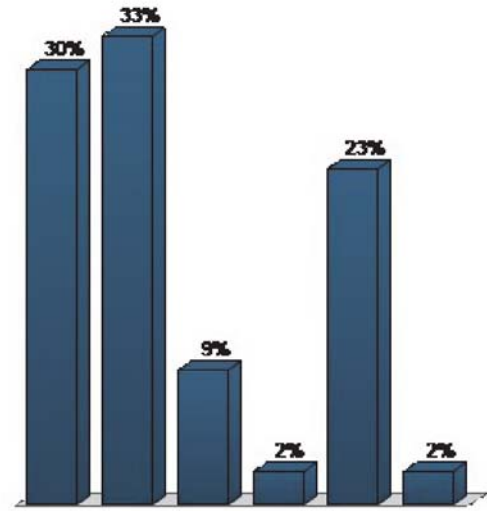
2. Where do you live (choose 1): (Multiple Choice)

	Responses	
	Percent	Count
Right downtown	0%	0
In an historic neighborhood near downtown	48.72%	19
Inside the city limits in the suburbs	25.64%	10
Within the city planning area	2.56%	1
Outside the city limits, in Garland County	17.95%	7
Somewhere else – use note cards	5.13%	2
Totals	100%	39



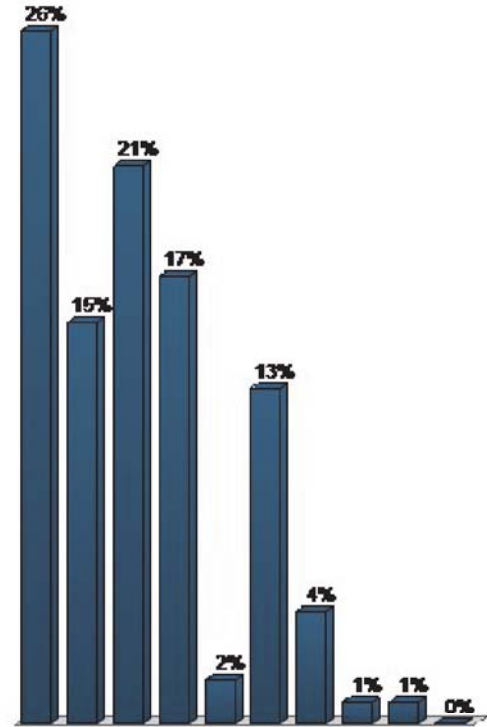
3. Where do you work (choose all that apply): (Multiple Choice - Multiple Response)

Responses		
	Percent	Count
Downtown	30.23%	13
Inside the city limits	32.56%	14
Outside the city limits, in Garland County	9.3%	4
Little Rock	2.33%	1
I'm not employed and/or retired	23.26%	10
Somewhere else – please use note cards	2.33%	1
Totals	100%	43



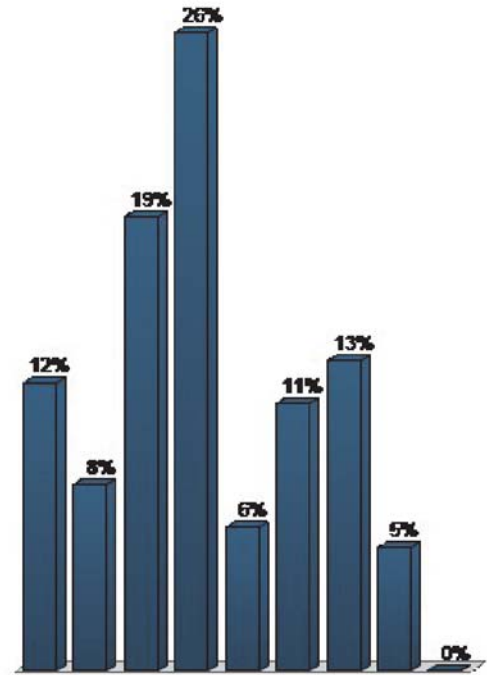
4. Things I like about Hot Springs’s image and character (choose top 3): (Multiple Choice - Multiple Response)

	Responses	
	Percent	Count
Downtown character	26.27%	31
Historic buildings	15.25%	18
National Parks / Natural environment	21.19%	25
Our Lakes	16.95%	20
Surrounding rural character	1.69%	2
Historic neighborhoods	12.71%	15
Our parks and open spaces	4.24%	5
Our streets	0.85%	1
Our public spaces	0.85%	1
Other – please use note cards	0%	0
Totals	100%	118



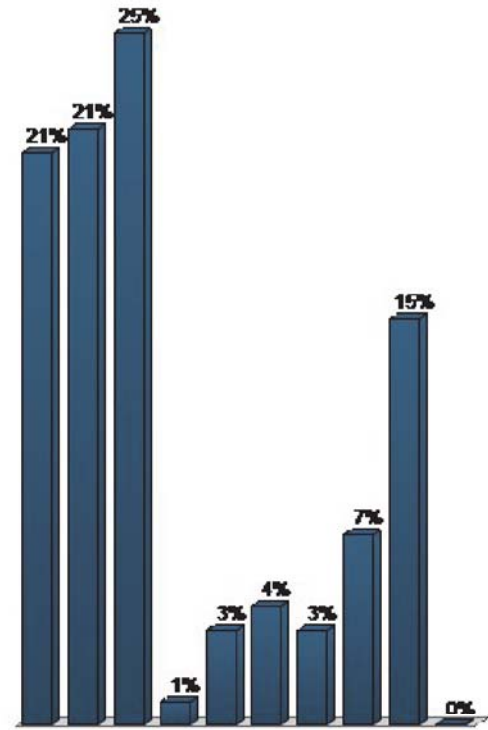
5. Things that I'd improve about Hot Springs' image and character (choose top 3): (Multiple Choice - Multiple Response)

Responses		
	Percent	Count
Design and maintenance of public spaces	11.97%	14
Our streets design	7.69%	9
Blighted neighborhoods	18.8%	22
Maintenance of historic buildings	26.5%	31
Our parks and open spaces	5.98%	7
Traffic	11.11%	13
More hip and artsy	12.82%	15
More event spaces downtown	5.13%	6
Other – please use note cards	0%	0
Totals	100%	117



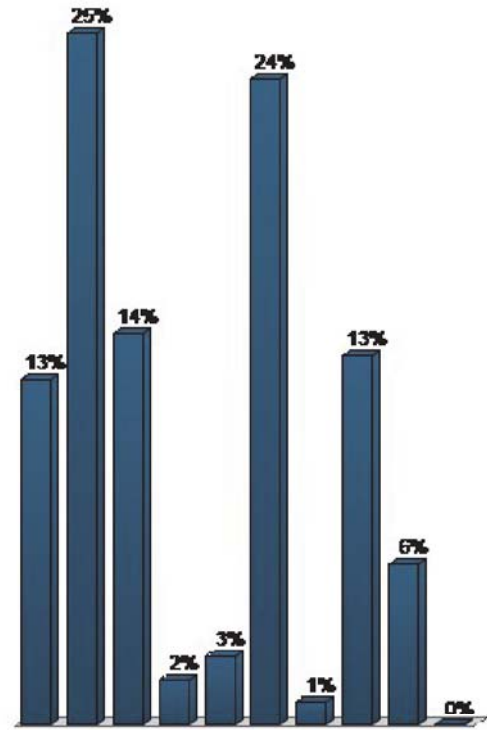
6. The items I feel most satisfied with related to Hot Springs’s quality of life are (choose 3): (Multiple Choice - Multiple Response)

	Responses	
	Percent	Count
Affordability / cost of living	20.51%	24
Arts and culture	21.37%	25
Relationship to outdoors	24.79%	29
A strong stable economy	0.85%	1
Demographic diversity	3.42%	4
Feeling of safety and security	4.27%	5
An active and accessible government	3.42%	4
Educational opportunities	6.84%	8
Feeling of community	14.53%	17
Other – fill out a comment card!	0%	0
Totals	100%	117



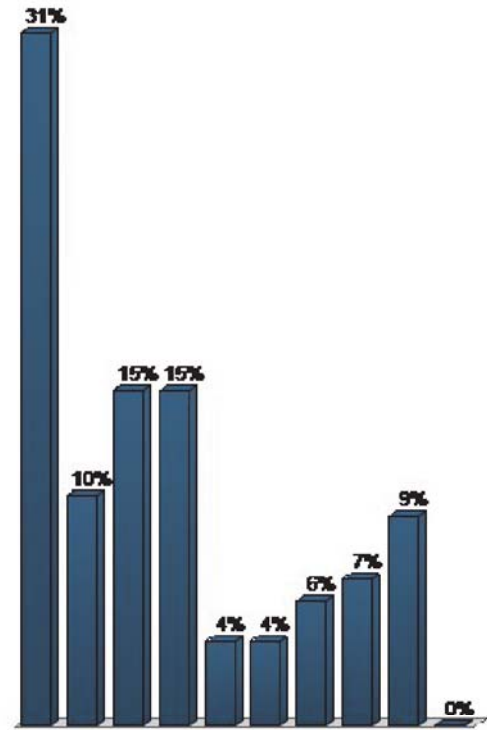
7. Hot Springs image is best exemplified by (choose top 3): (Multiple Choice - Multiple Response)

	Responses	
	Percent	Count
Horse Racing	12.61%	15
Access to nature and outdoors (Lakes and Parks)	25.21%	30
Vibrant Downtown	14.29%	17
Quality neighborhoods	1.68%	2
Great streets and public spaces	2.52%	3
History / historic buildings and neighborhoods	23.53%	28
Employment Opportunities	0.84%	1
Arts, music and culture	13.45%	16
Community pride and friendliness	5.88%	7
Other – please use note cards	0%	0
Totals	100%	119



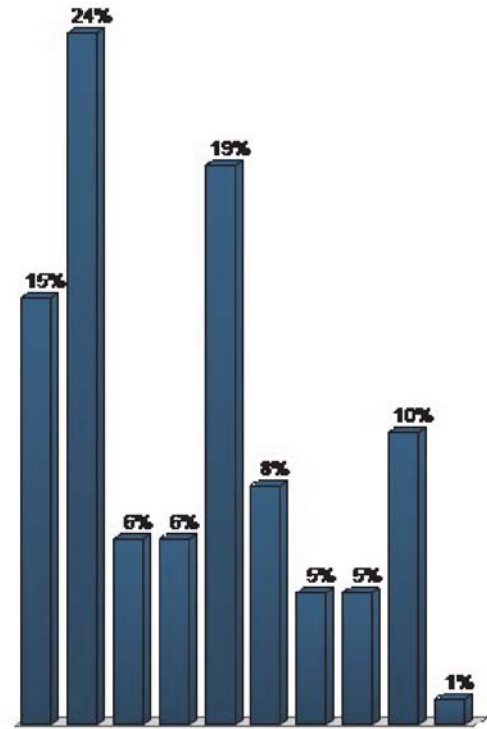
8. To me, Hot Springs' personality can best be described as (choose top 3): (Multiple Choice - Multiple Response)

	Responses	
	Percent	Count
Tied to the past	30.84%	33
Forward looking	10.28%	11
Artsy	14.95%	16
Conservative	14.95%	16
Free and easy	3.74%	4
Hip	3.74%	4
Diverse	5.61%	6
Entrepreneurial	6.54%	7
Frugal / cost conscious	9.35%	10
Other – please use note card	0%	0
Totals	100%	107



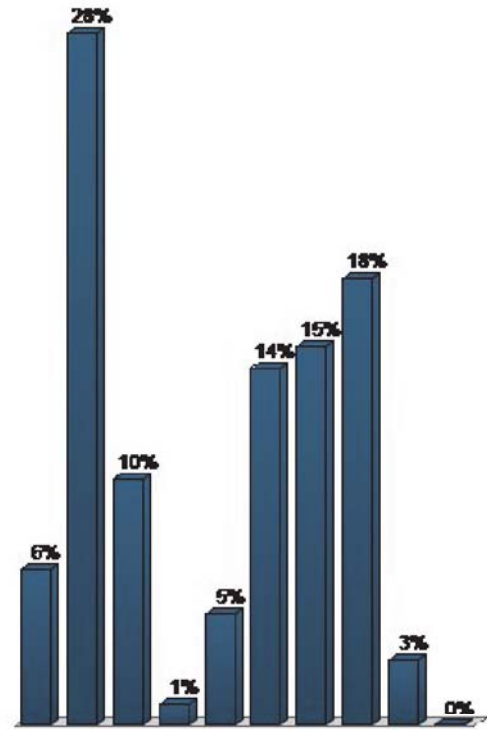
9. For me, the least positive things about Hot Springs’ quality of life are (choose top 3): (Multiple Choice - Multiple Response)

	Responses	
	Percent	Count
Housing affordability and /or choices	14.81%	16
Employment opportunities	24.07%	26
Sprawling development	6.48%	7
Lack of entertainment and food choices	6.48%	7
Traffic / Limited transportation options	19.44%	21
Access to job training	8.33%	9
Educational opportunities	4.63%	5
I don’t have a park near my neighborhood	4.63%	5
Stagnant population growth	10.19%	11
Other – please use note card	0.93%	1
Totals	100%	108



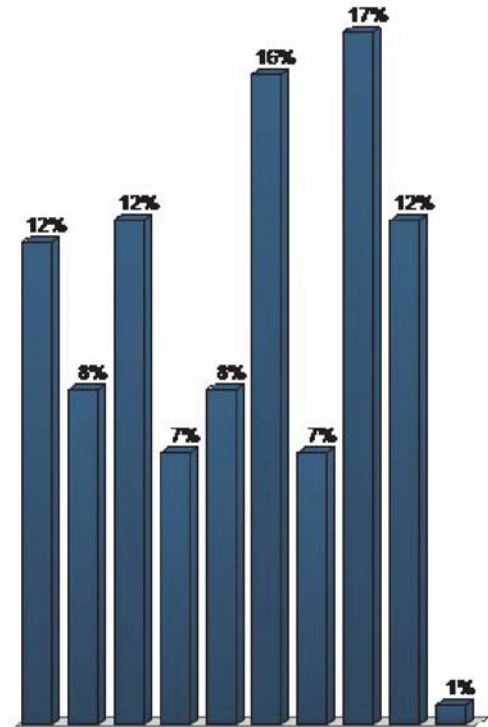
10. To me, I'd like to see Hot Springs become more (choose top 3): (Multiple Choice - Multiple Response)

	Responses	
	Percent	Count
Tied to the past	6.31%	7
Forward looking	27.93%	31
Artsy	9.91%	11
Conservative	0.9%	1
Free and easy	4.5%	5
Hip	14.41%	16
Diverse	15.32%	17
Entrepreneurial	18.02%	20
Frugal / cost conscious	2.7%	3
Other – please use note card	0%	0
Totals	100%	111



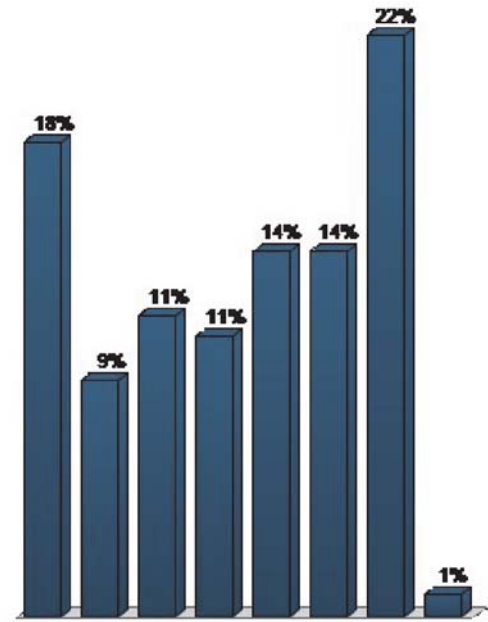
11. The most important “topics” to focus on in the Comprehensive Plan are (choose top 5): (Multiple Choice - Multiple Response)

	Responses	
	Percent	Count
Improving transportation options	11.86%	23
Quality and quantity of parks and open space	8.25%	16
Housing choices and affordability	12.37%	24
Regional cooperation	6.7%	13
Expansion and quality of City services	8.25%	16
Economic development	15.98%	31
Demographic diversity	6.7%	13
Neighborhood revitalization	17.01%	33
Environmental responsibility	12.37%	24
Other – please use note card	0.52%	1
Totals	100%	194



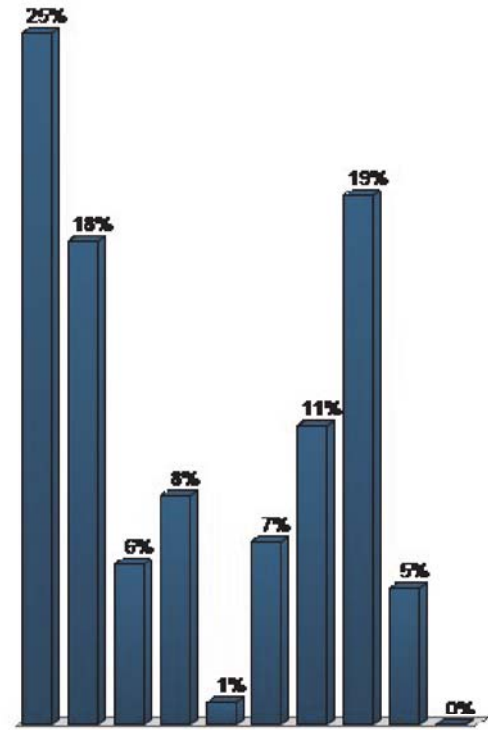
12. As it relates to existing plans and studies, we need to focus on and complete (choose top 3): (Multiple Choice - Multiple Response)

	Responses	
	Percent	Count
The Downtown Masterplan	18.03%	22
The Gateway Community Masterplan	9.02%	11
The Malvern Gateway Corridor and District Plan	11.48%	14
The Green Infrastructure Plan	10.66%	13
Complete Streets Plan	13.93%	17
Transportation Improvements Plan	13.93%	17
Downtown Parking, Pedestrian, and Bicycle Plan	22.13%	27
Other – please use note card	0.82%	1
Totals	100%	122



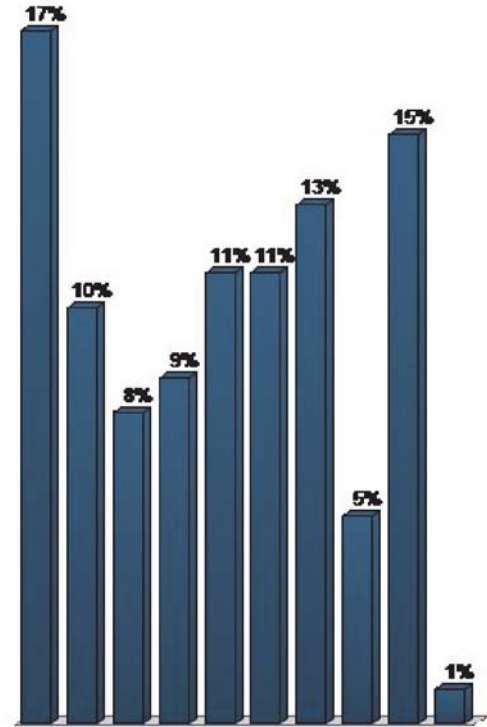
13. Critical social and cultural issues that should be prioritized include (choose top 3): (Multiple Choice - Multiple Response)

	Responses	
	Percent	Count
Homelessness	25.21%	30
Employment opportunities	17.65%	21
Demographic diversity	5.88%	7
Aging population	8.4%	10
Loss of rural lifestyle / agriculture	0.84%	1
Job training and education	6.72%	8
Housing affordability	10.92%	13
Neighborhood revitalization	19.33%	23
The Equitable distribution of public facilities	5.04%	6
Other – please use note card	0%	0
Totals	100%	119



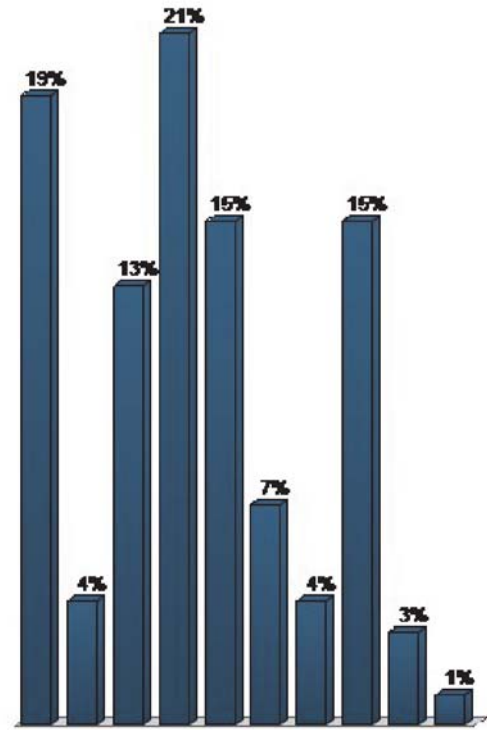
15. As it relates to transportation planning, we need (choose top 3): (Multiple Choice - Multiple Response)

	Responses	
	Percent	Count
More sidewalks	17.24%	20
More bike lanes	10.34%	12
Construct greenways	7.76%	9
Construct complete streets	8.62%	10
Better transit service in town	11.21%	13
Better regional transit	11.21%	13
Reduce traffic congestion	12.93%	15
Better road connectivity	5.17%	6
Downtown Parking	14.66%	17
Other – please use note card	0.86%	1
Totals	100%	116



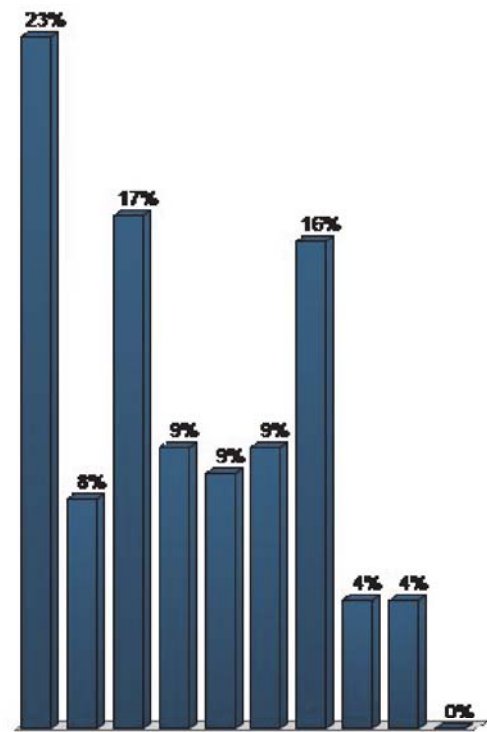
16. As it relates to housing, (choose top 3): (Multiple Choice - Multiple Response)

	Responses	
	Percent	Count
Encourage more affordable housing development	18.69%	20
Appropriately increase housing density	3.74%	4
More mixing of uses and housing diversity	13.08%	14
Promote more neighborhood preservation	20.56%	22
More housing downtown	14.95%	16
More connected neighborhoods	6.54%	7
Promote more compact neighborhoods	3.74%	4
Neighborhood design standards and guidelines	14.95%	16
Let the market decide what to build and sell	2.8%	3
Other – please use note card	0.93%	1
Totals	100%	107



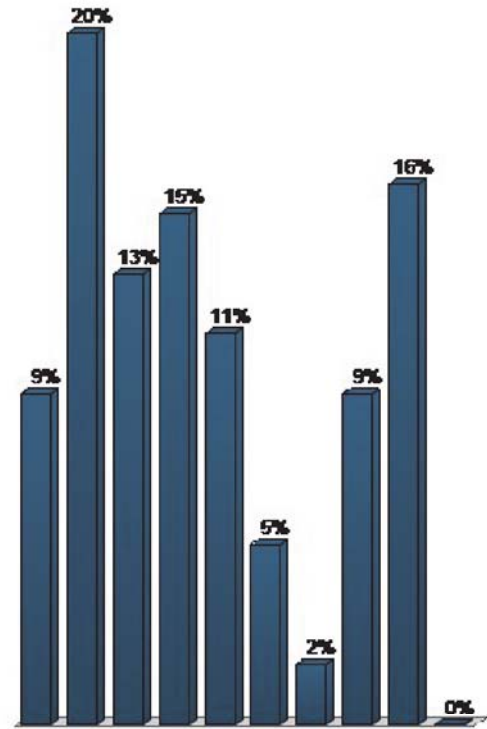
17. As it relates to natural open space and the outdoors, the City should (choose top 3): (Multiple Choice - Multiple Response)

	Responses	
	Percent	Count
Protect our lakes, rivers, and streams	23.08%	27
Protect hillsides and steep slopes	7.69%	9
Protect native forest and tree cover	17.09%	20
Better promote outdoor recreation assets	9.4%	11
Promote planting more trees everywhere	8.55%	10
Connect natural areas into green network	9.4%	11
Promote green engineering of infrastructure	16.24%	19
Flood plain protection	4.27%	5
Less sprawling development	4.27%	5
Other – please use note card	0%	0
Totals	100%	117



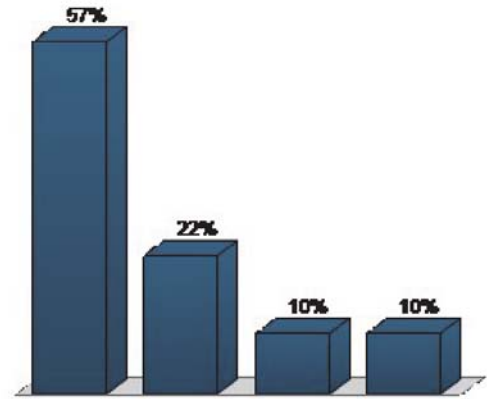
18. As it relates to improving downtown, I would like to see (choose top 3): (Multiple Choice - Multiple Response)

	Responses	
	Percent	Count
More shops, restaurants and entertainment	9.48%	11
More places to live	19.83%	23
More types of jobs	12.93%	15
Safer walking / biking connections to downtown	14.66%	17
A central gathering and event space	11.21%	13
More festivals and events	5.17%	6
More hotels	1.72%	2
Better maintenance of public spaces	9.48%	11
Parking access, supply, management	15.52%	18
Other – please use note card	0%	0
Totals	100%	116



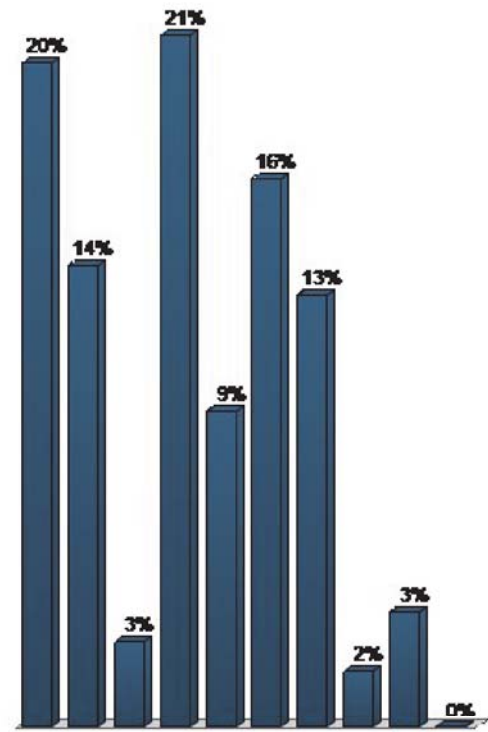
19. As it relates to the addition of Entertainment Districts downtown (choose 1): (Multiple Choice)

Responses		
	Percent	Count
Yes - it will be good for business downtown	57.5%	23
No - it creates concerns for public safety	22.5%	9
I don't have a strong opinion either way	10%	4
I don't know, I need more information	10%	4
Totals	100%	40



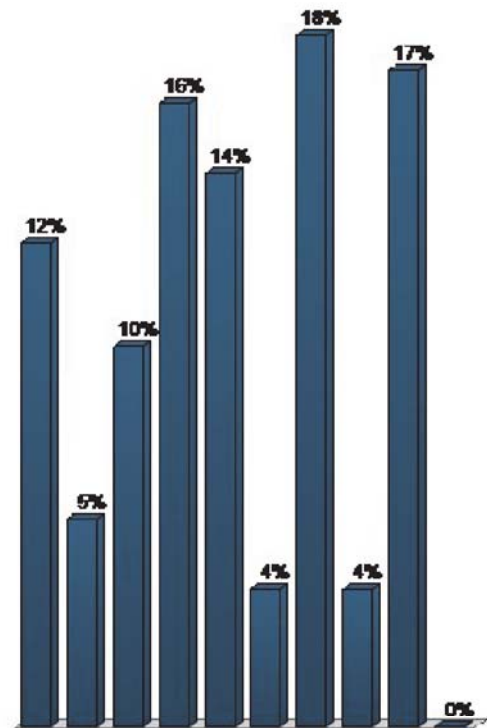
20. As it relates to land use planning and policy, the City should (choose top 3) (Multiple Choice - Multiple Response)

	Responses	
	Percent	Count
Focus on downtown redevelopment	19.66%	23
Focus on neighborhood revitalization	13.68%	16
Protect the surrounding rural countryside	2.56%	3
Protect and preserve the natural environment	20.51%	24
More compact and walkable development	9.4%	11
Provide more transit options and linkages	16.24%	19
Improve the major corridors into town	12.82%	15
Consider expanding city limits	1.71%	2
Better manage development outside city limits	3.42%	4
Other – please use note cards	0%	0
Totals	100%	117



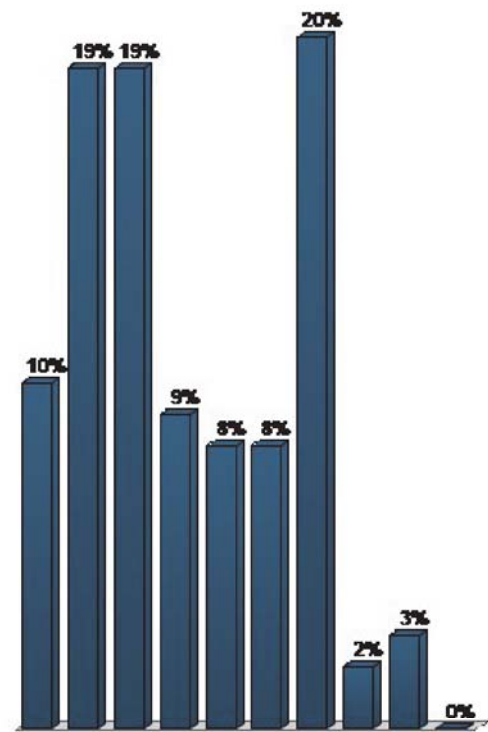
21. As it relates economic development planning and policy, the City should (choose top 3): (Multiple Choice - Multiple Response)

	Responses	
	Percent	Count
Promote job training and education	12.5%	14
Explore regional cooperation / collaboration	5.36%	6
Expand entertainment industry	9.82%	11
Expand cultural tourism	16.07%	18
Expand outdoor recreation tourism	14.29%	16
Expand use of race track for large events	3.57%	4
Support entrepreneurship and incubators	17.86%	20
Invest in “pad ready” industrial sites	3.57%	4
Promote Hot Spring’s unique qualities nationally	16.96%	19
Other – please use note card	0%	0
Totals	100%	112



22. As it relates to regional cooperation and partnerships, the City should (choose top 3): (Multiple Choice - Multiple Response)

	Responses	
	Percent	Count
Link our greenways regionally	10.19%	11
Create regional transit connectivity	19.44%	21
Coordinate economic development	19.44%	21
Jointly promote the region	9.26%	10
Expand higher educational opportunities	8.33%	9
Expand jobs skills training	8.33%	9
Protect important environmental assets	20.37%	22
Balance regional growth	1.85%	2
No, we should just focus on Hot Springs	2.78%	3
Other – please use note card	0%	0
Totals	100%	108



23. I plan on continuing to participate in the Comprehensive Plan process (choose 1): (Multiple Choice)

Responses		
	Percent	Count
YES!	80%	32
I am not sure	5%	2
NO!	0%	0
As much as my family, job, dog, cat will allow!	15%	6
Totals	100%	40

