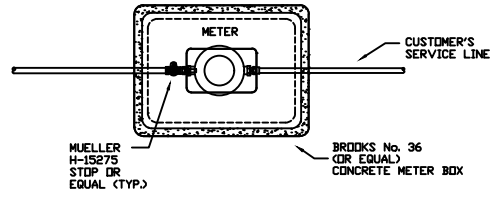


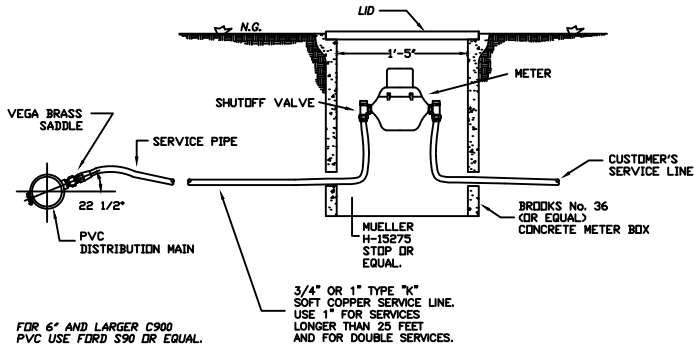
**TYPICAL SERVICE CONNECTION**

N.T.S. - CERTAIN PARTS HAVE BEEN ENLARGED FOR DETAIL



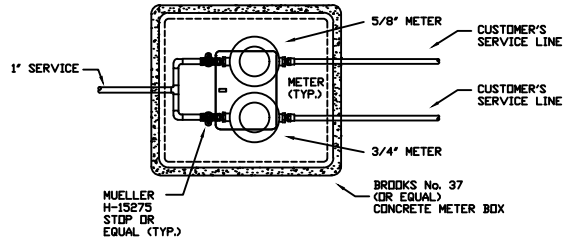
**SINGLE SERVICE METER BOX**

N.T.S. - CERTAIN PARTS HAVE BEEN ENLARGED FOR DETAIL



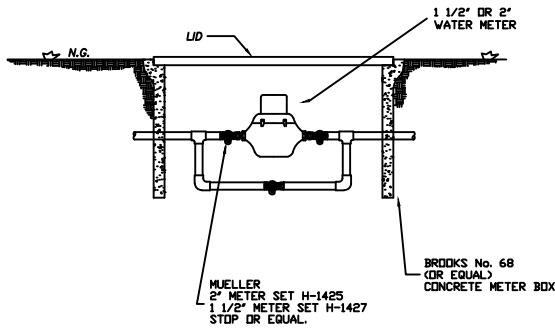
**TYPICAL SERVICE CONNECTION**

N.T.S. - CERTAIN PARTS HAVE BEEN ENLARGED FOR DETAIL



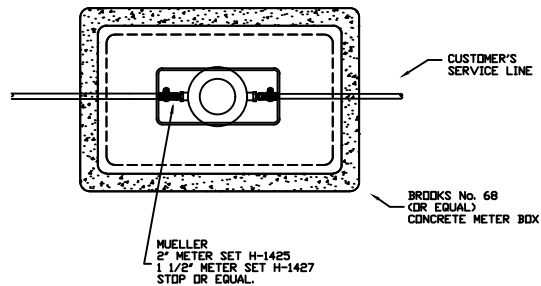
**DOUBLE SERVICE METER BOX**

N.T.S. - CERTAIN PARTS HAVE BEEN ENLARGED FOR DETAIL



**1 1/2" - 2" METER INSTALLATION**

N.T.S. - CERTAIN PARTS HAVE BEEN ENLARGED FOR DETAIL



**CITY OF HOT SPRINGS**  
 P.O. BOX 700  
 HOT SPRINGS  
 ARKANSAS 71901  
 Tel (501) 321-6888 Fax (501) 321-6987  
 UTILITY ENGINEERING DEPARTMENT  
 Utility Engineering Office, (501) 321-6884

**HOT SPRINGS**  
 INDUSTRIAL PARK  
 HOT SPRINGS, ARKANSAS  
 www.hot-springs.com

REVISIONS	DESCRIPTION	DATE	NUMBER

PROJECT TITLE:  
**STANDARD DETAIL DRAWING  
 WATER METER INSTALLATION**

ENGR. SEAL:

DATE:	01/01/2007
SCALE:	N.T.S.
CAD FILE:	WATER SPECS
DRAWN BY:	S.Y.
DESIGNED BY:	
CHECKED BY:	
SHEET:	